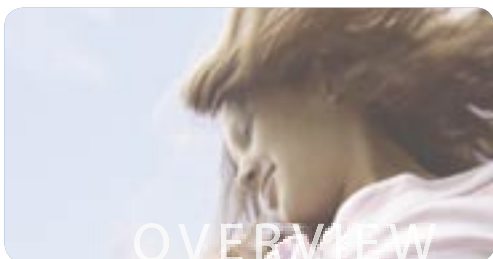


Regence BreakthruSM | For Individuals



Regence BreakthruSM for Individuals and Families

Getting the right fit is important, whether you're talking about contact lenses, shoes, or the perfect pair of jeans. It's also true of health coverage. You wouldn't want someone else's health plan—one that costs too much or doesn't meet your needs.

For something as important as your health, you want coverage that is right for you—something that fits you and your family.

Regence Breakthru is that kind of health plan. It's not complicated. And it's uniquely affordable and full of value.

A health plan that's simple to choose and to use

Regence Breakthru is a series of plans that are innovative in their simplicity. They're easy to use and to understand.

First, you pick one of three available coverage levels:

- Breakthru 50 (50% coverage)
- Breakthru 70 (70% coverage)
- Breakthru 80 (80% coverage)

Then you choose from the available deductible options to create the plan that works best for you and your family.

Seeing a doctor is also easy. You don't need a primary care provider or referrals. And you can choose from almost 22,000 providers in our service area. You also have access to care worldwide through the BlueCard[®] program.



Making care affordable

Regence Breakthru's range of coverage levels and deductibles keeps rates reasonable. Getting care is also affordable. Benefits include:

- Unlimited office visits covered at 100%* after the copay (before meeting the deductible)**
- Coverage of generic prescription drugs with a copay (before meeting the deductible)**
- Preventive care benefits**
- Vision benefits**
- Occupational injury benefit (limitations apply)
- A \$2 million lifetime maximum benefit
- The RegenceRx™ prescription drug discount program

With these features, you **can** afford the care you need.

Priced for students and kids

One of Regence Breakthru's more exciting features is its pricing for subscribers aged 0-24, which is great for parents or grandparents looking to cover their kids or grandkids.

Regence Advantages provide added value

Regence Breakthru also includes health-smart and dollar-wise advantages that come with Regence membership:

- Discounts on health club memberships
- Discounts on LASIK surgery
- Discounts on eyeglasses/contact lenses
- Discounts on hearing aids

The most important thing: With Regence Breakthru, affording care and coverage **can** be a comfortable fit.

**X-rays, lab services and other professional services are subject to the deductible and coinsurance.*

***Only on Breakthru 70 and 80 plans.*

Let Regence work for you online:

Shop and apply for Regence coverage <

Find a doctor <

Check on claims status <

Review eligibility <

And more. All at www.wa.regence.com